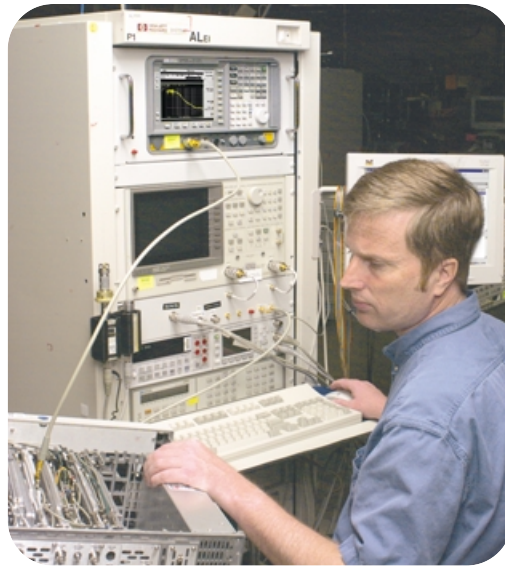




Agilent ESA Series Spectrum Analyzer

Flexibility to select the right level
of functionality for your needs



Three express analyzers available
for faster delivery and best value



- 0.4 dB overall amplitude accuracy
- Fast sweep times, 1ms minimum
- 5 minute warm up to guaranteed performance
- Wide set of built-in power measurements
- Integrated measurements for noise figure and phase noise (opt)
- RMS, quasi-peak, peak detectors
- Built-in help
- Worldwide customer support



Agilent Technologies

The Agilent ESA Spectrum Analyzer

Large high-resolution, high-contrast color display makes viewing multiple traces easy.

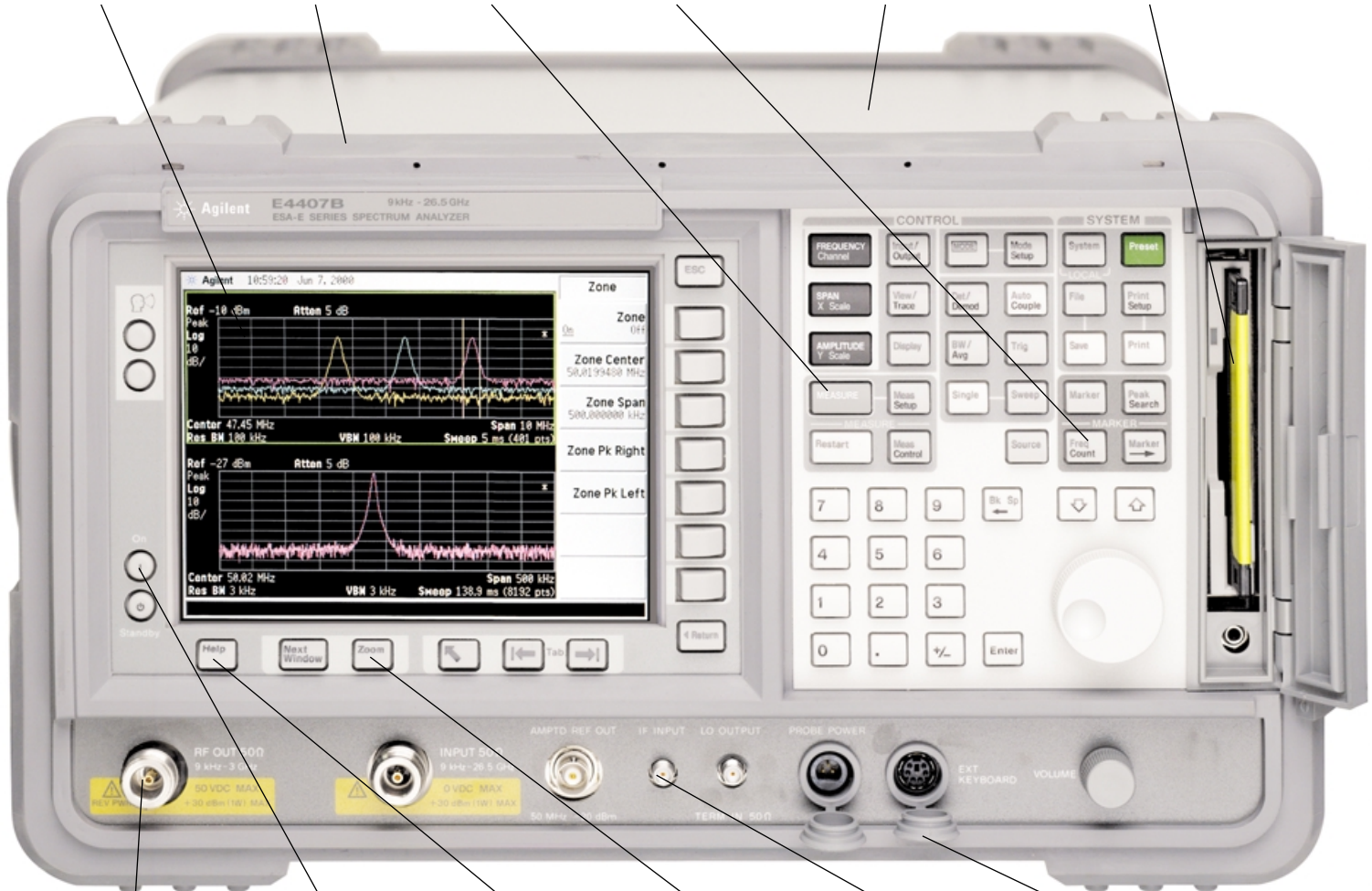
Rugged case with rubber encased front and rear frames resists transportation stresses.

Built-in one-button measurement routines.

Built-in counter precisely identifies signals using the 1 Hz resolution marker-based counter.

Flexible hardware/software environment allows focused applications like GSM/EDGE and modulation analysis.

Built-in floppy disk drive provides PC compatibility and data archiving.



Built-in tracking generator provides an RF source for scalar network analysis (optional).

Full measurement accuracy after just a 5 minute warm-up.

Built-in help function eliminates the need to carry manuals into the field.

Zoom windows provides split screen display with both wide and narrow spans.

External mixing extends frequency range to 325 GHz (optional).

Weather resistant front panel allows operation in rain and high humidity.

Durable, rugged design

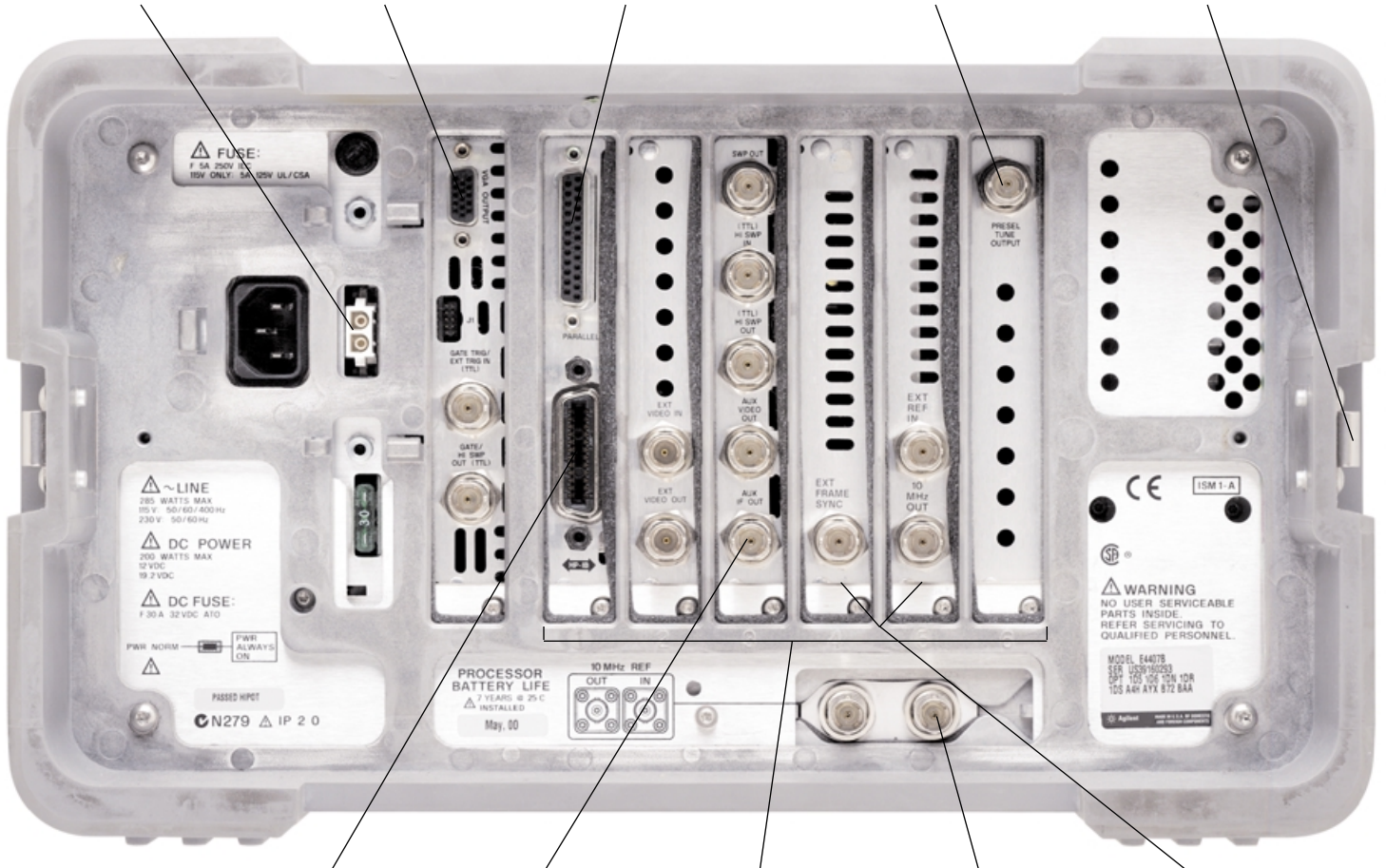
12 Vdc operation from automotive batteries.

Add an external VGA color monitor.

Parallel port supports most HP-compatible printers.

Supports Agilent preselected external mixers (optional).

Snap-on battery pack for portability (optional).



High speed GPIB interface (standard). RS-232 (optional) can replace GPIB.

Input signal down converted to 21.4 MHz (optional).

Flexible card cage allows you to customize the ESA and add future upgrade enhancements.

Use an external frequency reference for even more accuracy.

Digital demodulation hardware for current and future communications systems (optional).

Flexibility to select the right functionality and performance for your need

The features and benefits of the ESA series spectrum analyzer

The ESA was designed and built by spectrum analysis experts. Hewlett-Packard introduced the first spectrum analyzer enabling a whole new world of technology. Agilent has inherited this legacy and continues to build upon the tradition of dependability and excellence.

From years of practice Agilent has come to know the intricacies and nuances of spectrum analysis. This is why the ESA is able to provide the most complete set of traceable, guaranteed, and warranted specifications compared to other spectrum analyzers in its class.

Agilent's leadership and commitment combined with the ESA's robust and flexible instrument design and most complete set of built-in measurement features is why more engineers choose the ESA over other spectrum analyzers on the market.

- Flexible performance
- Flexible price
- Flexible platform

Express analyzers

The ESA is available in three express analyzers.

ESA basic analyzer

For basic, quality, spectrum analysis on RF or microwave signals at an affordable price. Includes many built in measurement functions.

ESA standard analyzer

For general spectrum analysis of RF or microwave signals. Includes advanced set of firmware features and functions in an upgradable platform. Optional measurement features available such as noise figure and phase noise.

ESA communication test analyzer

For spectrum analysis and vector signal analysis including demodulation capability. Select from the ESA's optional built-in demodulation analysis applications or use with the Agilent 89601A VSA software for full featured vector signal analysis.

Simple to order, fast delivery, best value...

Express analyzer options are based on the most frequently ordered ESA configurations and most popular options. The express analyzer options simplify the ordering process while maintaining the flexibility of the ESA platform.

Just select the ESA express analyzer that meets your needs and budget.



Leading performance

Amplitude accuracy

The ESA offers leading performance in accuracy with a guaranteed overall amplitude accuracy of less than 1.0 dB error (< 3 GHz) based on traceable and warranted specifications. Other mid-range analyzers may specify only typical performance levels. For comparison, the ESA's typical level of performance based on a 2 sigma value (95%) is 0.4 dB. The ESA excels in overall amplitude accuracy whether comparing guaranteed specifications or expected levels of performance.

Frequency accuracy

The ESA provides a warranted internal frequency reference that may not be available in other mid-range analyzers. Further, the ESA has excellent frequency readout accuracy, a function of the frequency reference error as well as the span error coefficient, RBW, center frequency, and number of sweep points. The table below shows the excellent frequency readout accuracy as warranted on the ESA for some example test setups.

Warranted frequency readout accuracy

Frequency	Span	RBW	Sweep points	Option 1D5	Frequency readout accuracy
1 GHz (basic analyzer)	400 kHz	3 kHz	401	No	5.46 kHz
1 GHz	400 kHz	3 kHz	8192	Yes	2.15 kHz
300 MHz	1 kHz	10 Hz	8192	Yes	47 Hz
26 GHz	100 MHz	1 MHz	8192	Yes	665 kHz

Leading performance – continued

Superb measurement range and dynamic range

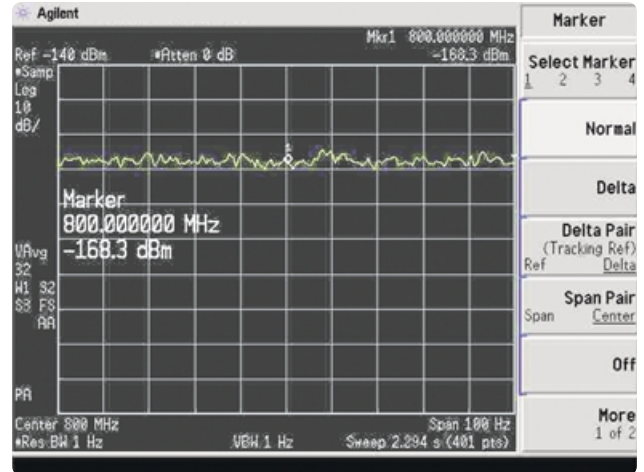
A spectrum analyzer's measurement range is tested by two types of measurements:

Measuring low level signals such as spurs

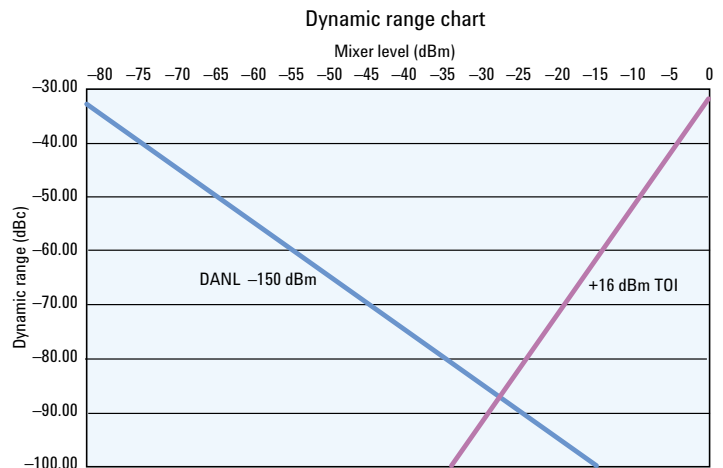
The ESA offers top performance thanks to its optional built in low noise, high gain preamplifier. Achieving a Displayed Average Noise Level (DANL) of better than -167 dBm.

Measuring lower level signals next to higher power signal

A spectrum analyzer's dynamic range is a function of both its display average noise level (DANL) performance and its intermodulation distortion performance. The ESA third order intermodulation distortion performance is excellent with a performance level of $+16$ dBm third order intercept (TOI) ($+7.5$ for basic analyzer configurations). Combined with the ESA's DANL performance of -150 dBm/Hz, the ESA's overall dynamic range sets the standard for the medium class analyzer. In addition, the ESA features a standard 5 dB step attenuator making it easy to optimize the spectrum analyzer's mixer level settings to achieve the best dynamic range.



Wide measurement range with built-in preamplifier



Excellent third order intermodulation provides the maximum dynamic range

Leading performance – continued

5 Minute warm up time

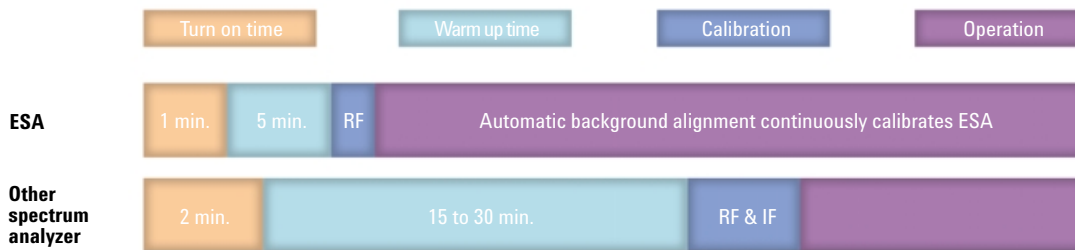
Most spectrum analyzers take 15 minutes to 1 hour to warm up before the specifications in the data sheet are valid. Not with the ESA. The ESA Series takes only 5 minutes to warm-up so technicians and engineers spend little time waiting for instrument stabilization.

Automatic background alignment

The automatic, internal background alignment feature gives consistently accurate results over varying temperatures. This is especially beneficial when operating the ESA outdoors or in varying temperature conditions. Further, the ESA provides guaranteed performance specifications over wide temperature range of 0 to 55 degrees centigrade.

Fast sweep times

The ESA Series spectrum analyzer features very fast sweep times. With sweep times as low as 1 ms for an RF sweep and 25 ns for a zero span sweep the ESA has the fastest sweep times for an analyzer in its class. Fast sweep times are particularly useful when searching for low level signals. Sometimes, setups can take seconds or even minutes. For ease of use the ESA's sweep times are auto coupled to ensure you are getting the fastest speed with warranted performance.



Five minute warm up time with advanced background alignment

Leading performance – continued

Wide selection of detectors

The ESA has a wide selection of detectors to meet all of your test needs; including averaging (RMS), peak, negative peak, sample, and quasi-peak (optional). Notably, the ESA's RMS averaging detector improves your measurement repeatability and efficiency when testing noise like signals such as today's 2G and 3G formats. In addition the RMS detector provides RMS results as required by several standards.

The ESA's optional quasi-peak detector enables you to verify your EMI performance of your DUT, making the ESA a flexible tool for all types of design and verification testing.

For a dedicated EMI instrument with established measurement routines and EMI software the E7400A Series EMC precompliance analyzer may be more appropriate.

Narrow resolution bandwidth filters

Achieve the maximum frequency resolution with the ESA spectrum analyzers optional narrow resolution bandwidths. The flexibility of the ESA allows you to select the resolution that you need. The base performance of the ESA includes a 1 kHz RBW. Add the narrow resolution bandwidth option (1DR) to get 10 Hz minimum RBW's (100 Hz on the basic analyzer). Or, for the maximum performance, order the high stability timebase option (1D5) in addition to the narrow resolution bandwidth option to get 1 Hz RBW's.

Remote transfer rate

The ESA has excellent measurement speed allowing up to 45 remote trace transfers per second over GPIB. In addition, several features of the ESA allow you flexibility in your test setups to optimize for speed.

Fast sweep times - ESA achieves the fastest minimum sweep times for an analyzer in its class with minimum RF sweep time of 1 ms or 25 ns for a zero span measurement. (4 ms minimum sweep time for basic analyzer)

Flexible sweep points - the number of sweep points in the standard and communication test analyzers can be varied from 101 to 8192 points or 2 to 8192 in zero span. Lowering the number of sweep points means a shorter trace to transfer. If necessary, increasing the number of sweep points provides greater frequency bin resolution.

Flexible data formats - data formats in the ESA can be set to ASCII, INT32, INT16, REAL32, and binary. Optimum speed is achieved using binary format.

Segmented sweep - Using segmented sweep you can measure up to 32 discontinuous segments of the spectrum at one time with one sweep. (standard or communication test analyzer)

Measurements made easy

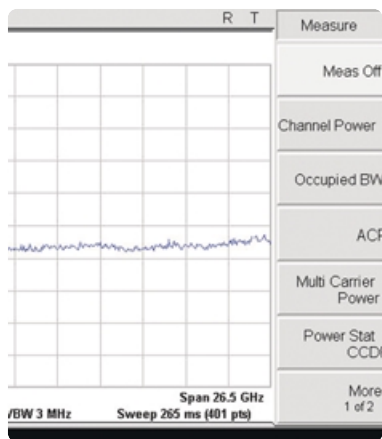
PowerSuite - Absolute confidence in making power measurements

The ESA simplifies the task of making common power measurements through its built-in power measurements. These measurement functions are easy to use.



Step 1

- Press the measurement button on the front panel.

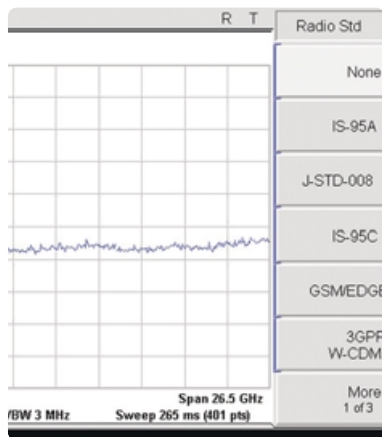


Step 2

- Select the desired measurement functions.

The ESA offers the widest selection of built-in power measurements available in a mid range instrument:

- Channel power
- Occupied bandwidth
- Adjacent channel power (ACP)
- Multi-carrier ACP
- Power statistics (CCDF) (not available on the basic analyzer)
- Harmonic distortion
- Burst power
- Intermodulation distortion (TOI)
- Spurious emissions
- Spectrum emissions mask



Step 3

- Select your desired standard-based format or customize your test setup

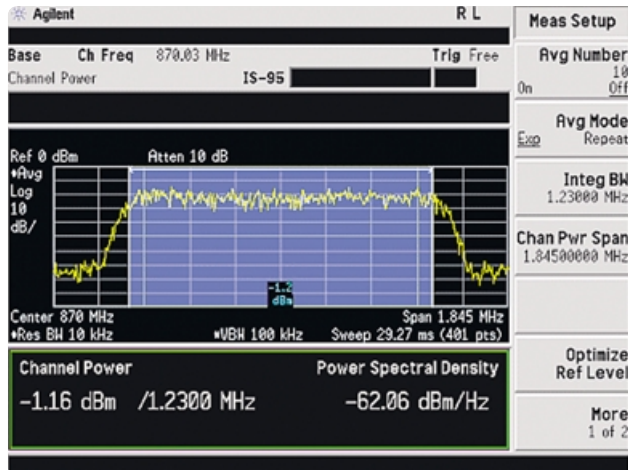
The ESA includes a wide selection of standards based test setups including the following formats:

- cdmaOne (IS-95A/C)
- cdmaOne (J-STD-008)
- NADC
- GSM/EDGE
- W-CDMA 3GPP
- cdma2000 SR1
- cmda2000 SR3-MC
- cdma2000 SR3-DS
- PDC
- Bluetooth
- TETRA
- 802.11a,b,g
- HiperLAN/2
- DVB-T

Choose the desired standard-based test setup by pressing Mode, Radio Std and then selecting the desired radio standard. Or, if desired, the measurement may be customized to meet your need.

Measurements made easy – continued

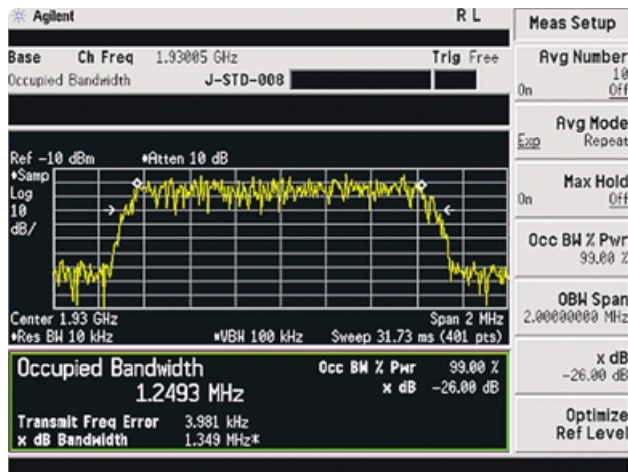
Example of ESA PowerSuite functions



channel power measurement of IS95 cdmaOne signal

Channel power

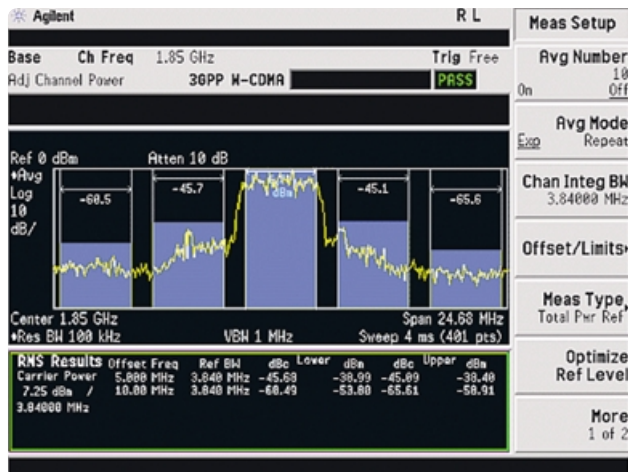
The channel power measurement measures and reports the power (integrated) in the channel as well as the computed power spectral density. For best accuracy and speed the ESA employs its built-in averaging detector (RMS).



OBW measurement of J-STD-008 cdma signal

Occupied bandwidth

The occupied bandwidth measurement places markers at the frequencies for which the specified percentage of the power is contained and reports this bandwidth. In addition, it reports the frequency error of the signal. The ESA's leading performance in span accuracy facilitates very accurate results.



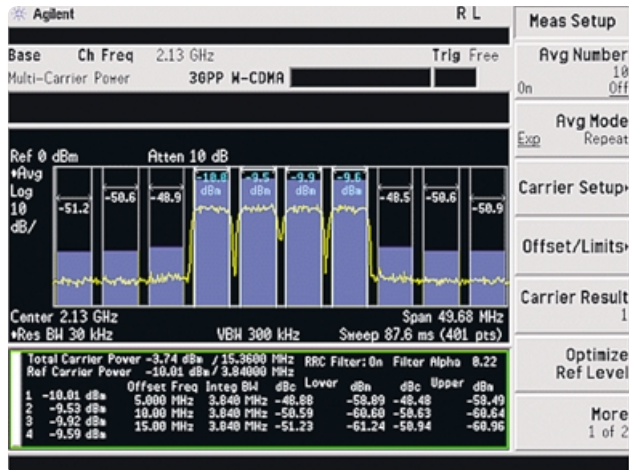
ACLR measurement of 3GPP W-CDMA signal

Adjacent channel power

The ESA's ACP measurement is very flexible providing the measurement of up to 6 offsets at once. For convenience, a root raised cosine filter is available for NADC and W-CDMA signals as required by the standards. In addition the ESA takes advantage of its built-in averaging detector (RMS) to improve measurement speed and accuracy and meet test standard requirements for RMS detection.

Measurements made easy – continued

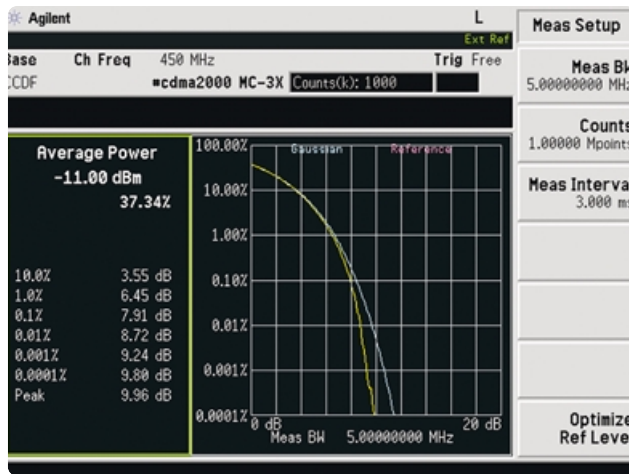
Example of ESA PowerSuite functions



ACLR measurement of 4 carrier 3GPP W-CDMA signal

Multi-carrier power ACP

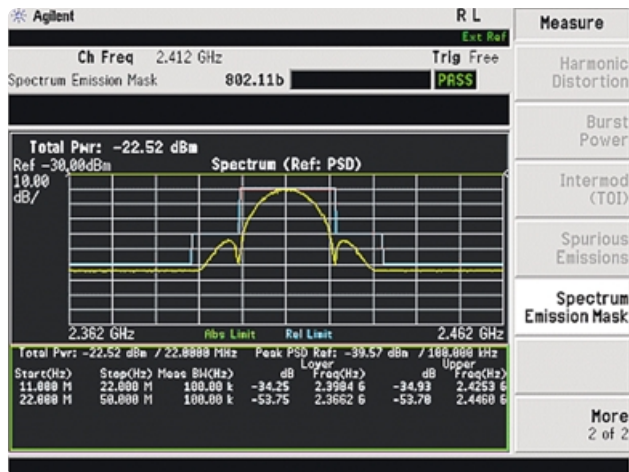
Multi-carrier signals are becoming more common in modern transmitter designs. The ESA can easily manage multi-carrier signals, as the ESA's function allows you to designate the reference carrier, set an RRC filter, and measure up to 3 offsets on each side of the signal.



CCDF measurement of four carrier cdma2000 signal

Power statistics (CCDF)

The ESA provides a complimentary cumulative distribution function (CCDF) curve that describes the amount of time the waveform spends at or above a given power level. In addition the measurement reports the peak to average power ratio. The ESA CCDF measurement provides accurate results for signals with OBW of up to 5 MHz or less. Using advanced calibration techniques the ESA can measure CCDF of bandwidths up to 10 MHz when used with Agilent's 89601A software. (standard and communication test analyzers only)



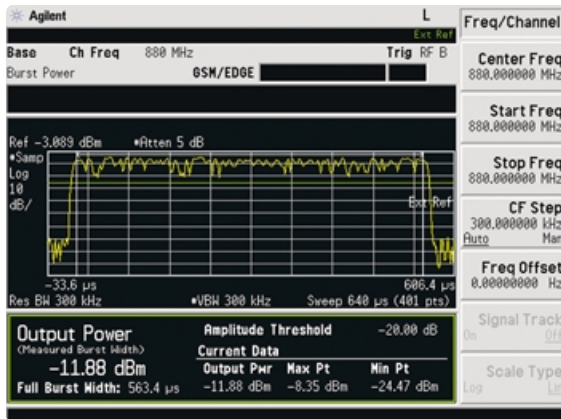
802.11b WLAN SEM test

Spectrum emissions mask (SEM)

Quickly determine the in-channel power and out-of-channel power spurious emissions as required for W-CDMA and wireless LAN formats. Or for custom test setup, the spectrum emission mask (SEM) measurements allows you to select up to five offsets with individual settings for RBWs and limits.

Measurements made easy – continued

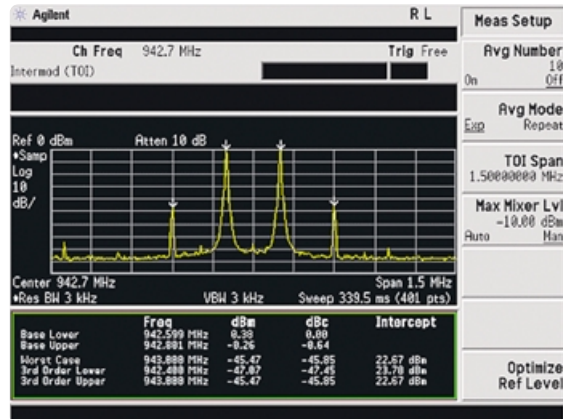
Example of ESA PowerSuite functions



Average burst power of EDGE signal

Burst power

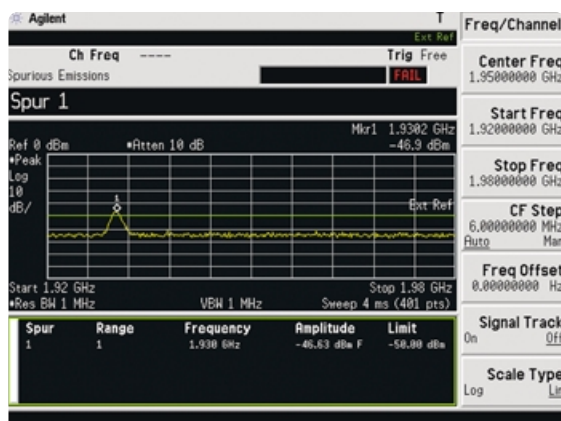
Measures the average power in zero span mode for the captured burst. The burst location and width can be automatically determined and reported by the ESA using its built in burst trigger, or if desired, an external trigger can be used.



Intermediation of a two-toned signal

Third-order intermodulation (TOI)

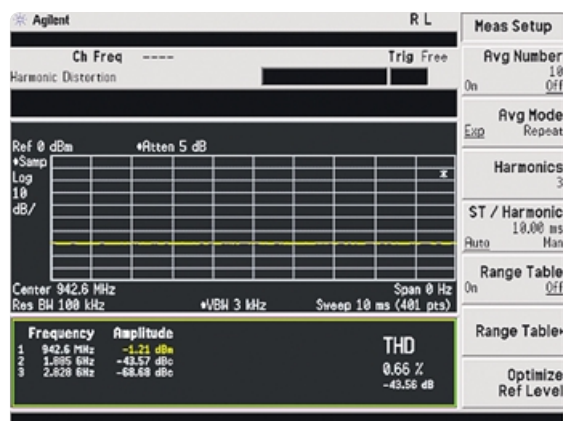
Measuring TOI is simple using the ESA. Just start the measurement and the ESA will find the two tones on screen and adjust markers to measure the lower and upper intermodulation products. The ESA's excellent internal TOI performance of +16 dBm ensures optimum dynamic range and accuracy.



3GPP W-CDMA TS 21.141 spurious emissions test

Spurious emissions

The spurious emissions measurement identifies and determines the power level of spurious emissions in user defined frequency bands. The measurement allows the user to set pass or fail limit lines and a reported spur threshold value. The results are conveniently displayed in a results table that can show up to 200 values.



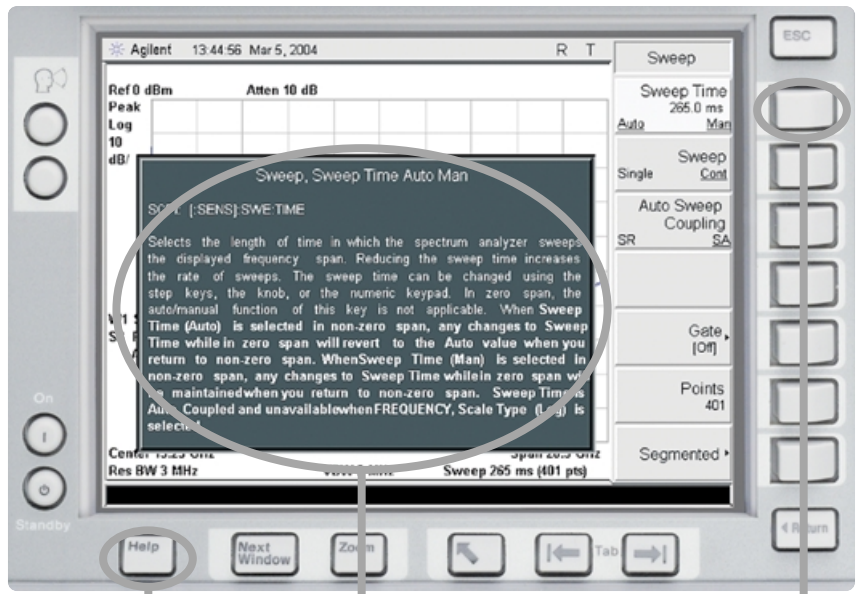
Measurement of the harmonics of a distorted CW signal at 1 GHz

Harmonic distortion

Easily measure a signals harmonics. Simply activate the measurement and the ESA will find the highest signal on screen, then tune and measure each of its harmonics in zero span up to and including the 10th harmonic. In addition the ESA will report the total harmonic distribution (THD) or the percentage of the signals power that is contained in the harmonics.

Measurements made easy – continued

ESA measurement features



Step 1
Press Help

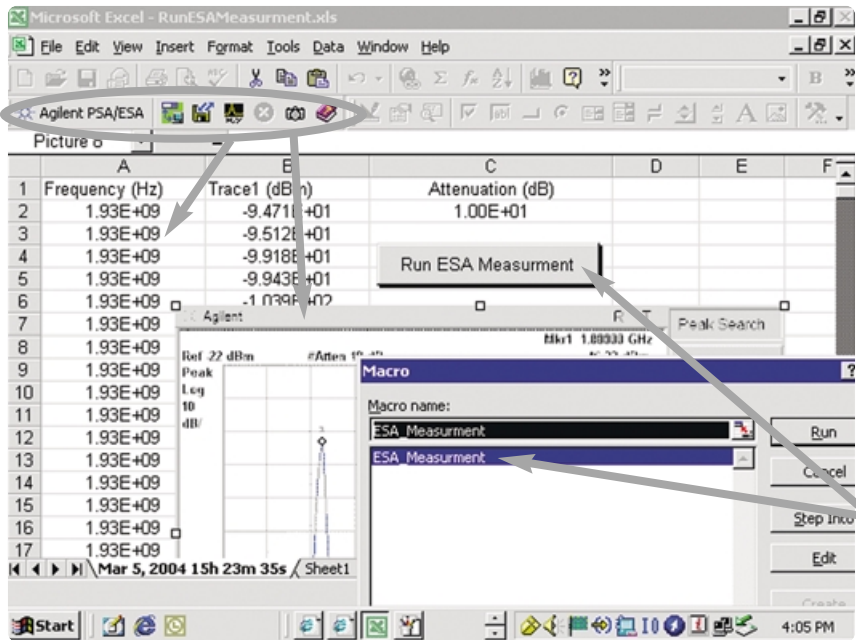
Step 3
A help screen appears with explanation and equivalent SCPI command (if applicable) for the key pressed

Step 2
Press any key or soft key

Built-in context sensitive help

The ESA's context sensitive help menus make it very easy to look up front panel, soft key, and hard key information, including its equivalent remote SCPI commands.

Easily record trace data, or screen shots in MicroSoft® Word or Excel with IntuiLink toolbar



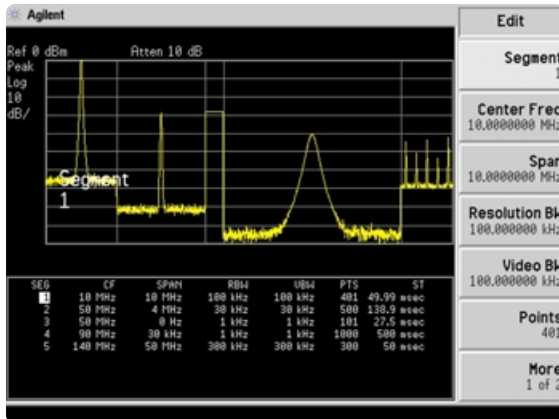
IntuiLink

With IntuiLink software you can conveniently save and document your results by linking the ESA to MS Word or Excel applications. In addition the IntuiLink software provides a simple programming interface to the ESA spectrum analyzer allowing you to easily write macros or functions within windows applications to control the ESA spectrum analyzer. IntuiLink is included free of charge with every ESA.

Write macros or programs to automate the ESA's measurement using IntuiLinks Active X/COM object.

Measurements made easy – continued

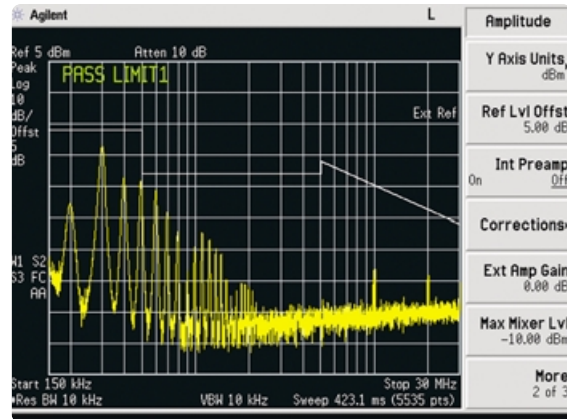
ESA measurement features



View separate parts of the spectrum at the same time

Segmented sweep

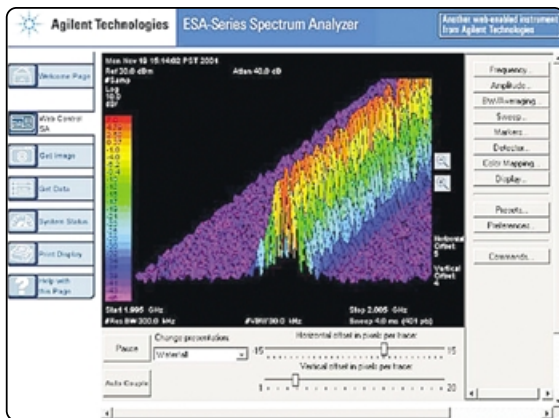
Segmented sweep allows you to view up to 32 discontinuous segments of the spectrum with varying levels of resolution at the same time. This feature allows you to view problem spots at the same time and save time while doing so by eliminating the need to retune or make long sweeps (standard and communication test analyzers only).



EN55011 Class A limit line with log scale

Log sweep

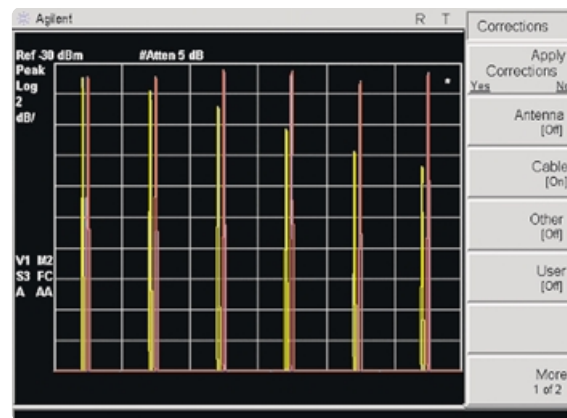
The log sweep function on the ESA makes it very easy to setup limit lines and view the spectrum in log scale. This is useful for meeting test requirements, such as CISPR, that specify requirements on a log scale (standard and communication test analyzers only).



3GPP W-CDMA TS 21.141 spurious emissions test

Remotely control and monitor the ESA over the internet

BenchLink web remote control (Option 230) enables you to remotely control your instrument over the internet or intranet. The software operates on a locally-networked computer connected to the ESA by GPIB. The ESA can then be controlled remotely from any client computer on the internet or intranet with a standard web browser.



Add correction factors for cables, antennas, or other devices

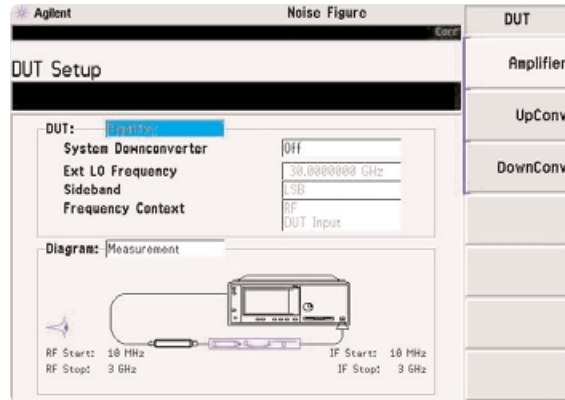
Amplitude corrections

Making amplitude corrections for cables, antennas, external mixers or other peripheral used with the ESA is simple using the ESA's built-in amplitude correction tables. Simply populate the ESA's amplitude correction table with correction factors and then turn the corrections on. Up to 4 correction tables may be loaded and applied at any one time.

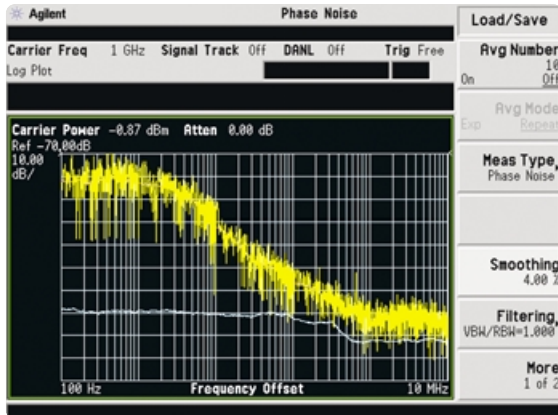
Application focused solutions

Noise figure

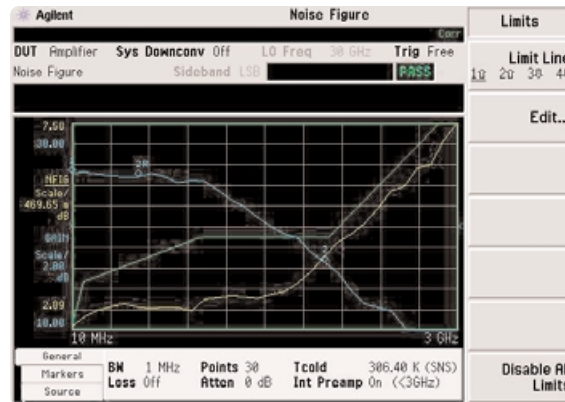
Option 219 (measurement personality), provides fast one-button noise figure and gain measurements via a user-friendly interface. Smart noise source (SNS) support, DUT setup menus, limit lines with pass/fail functionality, and context sensitive help are just some of the features that simplify noise figure measurements. Electronic storage and automatic download of excess noise ratio data from SNS to the ESA speeds up overall setup time and minimizes potential user error. The ESA also has an integrated uncertainty calculator that ensures valid measurements. With the optional internal preamplifier (Option 1DS) the instrument noise figure uncertainty is as low as ± 0.24 dB below 3 GHz, which will allow you to confidently characterize low noise figure devices.



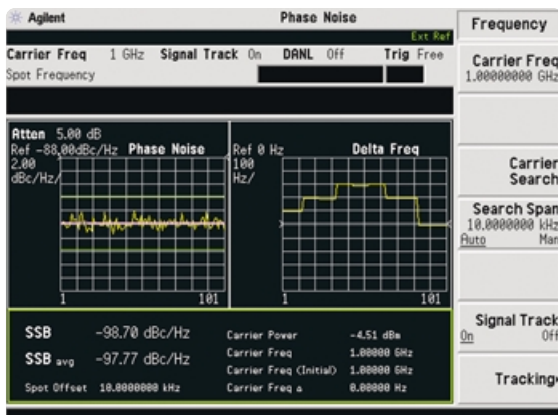
DUT setup menu



Phase noise versus offset frequency



Noise figure and gain measurement with limit line testing

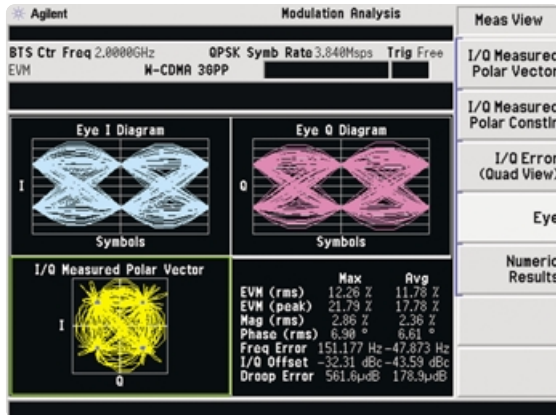


Phase noise and carrier drift

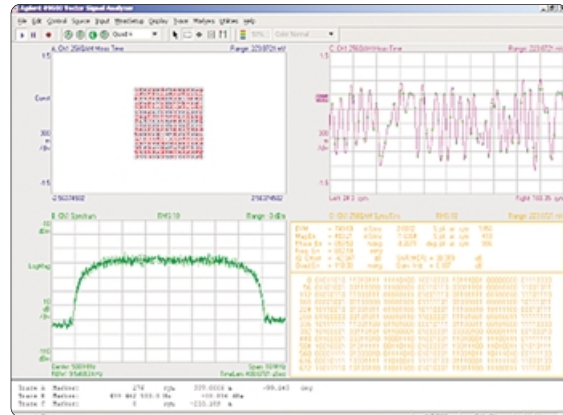
Phase noise

Option 226 (measurement personality) provides a log plot of phase noise in dBc/Hz versus offset frequency. Examine phase noise at a single offset frequency, or make phase jitter measurements utilizing an intuitive user interface.

Application focused solutions – continued



EVM measurement and eye diagram of QPSK signal



Flexible demodulation up to 256 QAM

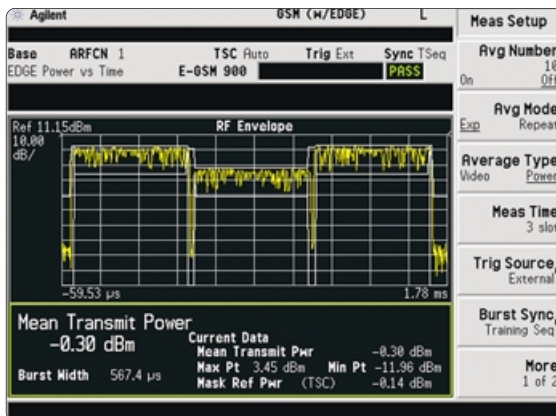
Modulation analysis

Option 229 (measurement personality) and COM (communication test analyzer) combine to allow integrated measurements of EVM and related metrics for all major 2G/3G formats. Constellation and eye diagrams are provided to help verify modulation quality. For full flexible demodulation and analysis, the free link to the 89601A VSA software is included.

89601A VSA link

This link adds the flexible digital demodulation and analysis capabilities of the 89601A software to the ESA Communication Test analyzer (Option COM).

- Make complex measurements on 3G and custom signals (composite EVM, code domain power, peak code domain error and more)
- More displays (trellis, spectrogram, EVM spectrum display and more)
- A user-adjustable adaptive equalizer allowing you to verify IF filter and other linear distortion effects
- Recording of time waveforms, which allows you to re-analyze signals and store them for future comparisons
- Flexible marker capabilities including time gating, integrated band power, and offset (delta) markers
- A link to the Agilent ESG Series signal generators for download and playback of signals
- Complete save and recall features

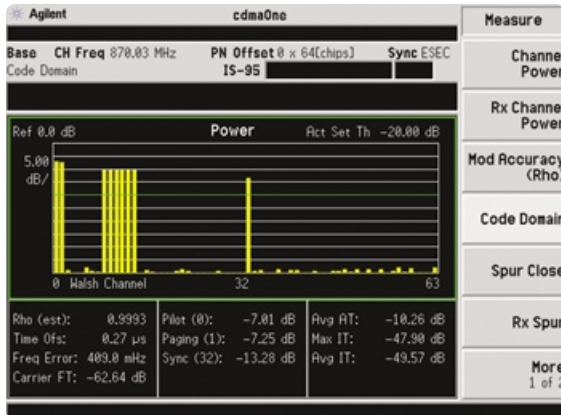


Power versus time of amplitude varying EDGE signal

GSM/GPRS/EDGE

Options BAH and 252 (measurement personalities) and COM (communication test analyzer) combine to provide all the GSM 450/900, DCS1800, PCS1900 tests required to verify the performance of GSM/GPRS mobile and BTS transmitters.

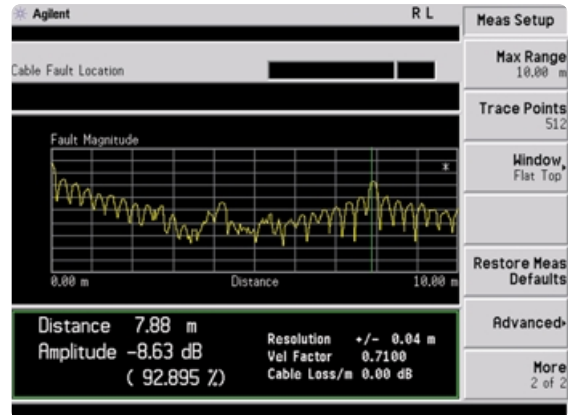
Application focused solutions – continued



Code domain power

cdmaOne

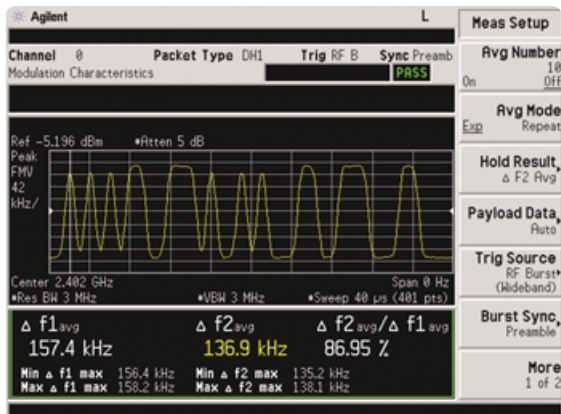
Options BAC (measurement personality) and COM (communication test analyzer) combine to make the cdmaOne standard tests, such as ACPR, that are required to verify the performance of cdmaOne transmitters.



Distance to fault calculation

Cable fault location

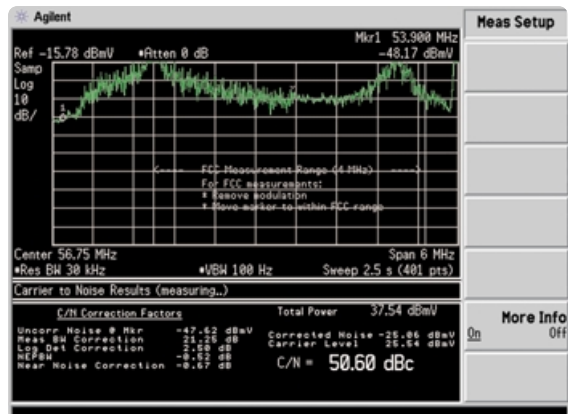
Options 225 (measurement personality), 1DN (tracking generator) and B7K (measurement kit) combine to identify distance to cable discontinuities for fault location and troubleshooting of cable installation and maintenance.



Modulation characteristic

Bluetooth™

Option 304 (measurement personality and digital demodulation hardware) provides one-button standards-based Bluetooth transmitter measurements.



Carrier to noise measurement

Cable TV field service and analog broadcast

Option 227 (measurement personality) provides cable TV operators fast, accurate and rugged spectrum analysis for field installation, ingress evaluation and troubleshooting.

Features and benefits summary

Leading performance

0.4 dB overall amplitude accuracy	For maximum measurement confidence based on 95% specification. 1.0 dB accuracy guaranteed.
Guaranteed frequency readout accuracy	Based on internal frequency reference.
Wide dynamic range with 16 dBm TOI	(Third order intercept) giving the ESA the widest dynamic range of any analyzer in its class.
-167 dBm DANL with built-in pre-amplifier	High-gain, low-noise, fully calibrated pre-amplifier increases sensitivity (optional).
Wide offset phase noise	Performance of -150 dBc Hz at 1 MHz offset (optional).
1-ms RF sweep time	Combined with > 45 measurements per second, provides virtual real-time updates. Responsive display makes circuit adjustment easier, while increasing the probability of intercepting intermittent signals.
Five-minute warm-up	Provides full measurement accuracy after just 5 minutes.
High-speed data transfer (GPIB)	> 45 measurements and transfers per second reduces measurement times in ATE environments.
Variable sweep (trace) points	Ranging from 101 to 8192, optimizes measurements for frequency resolution and accuracy versus speed.
Narrow digital RBW filters	Adds 1, 3, 10, 30, 100, 200, and 300 Hz resolution bandwidth filters for viewing closely spaced signals (optional).
Fast time-domain sweeps	Sweeps as fast as 2.5 ns per division in zero span.
Amplitude correction	Calibrates out frequency-related amplitude effects with built-in amplitude correction factor table.
Automatic background alignment	Continuously calibrates the analyzer. Eliminates the need for daily calibration. Guarantees accuracy over changing temperatures.
85 to 120 dB calibrated display range	Allows simultaneous display of large and small signals.
Optional built-in tracking generator	Combines spectrum and scalar test capability in a single instrument. One-button normalize function quickly calibrates the test setup.
5 dB step attenuator	Optimizes distortion-free dynamic range.
Wide selection of detectors	Including peak, RMS average, negative peak, and optional quasi-peak detector.
Temperature range	Guaranteed specifications provided over a wide temperature range of 0 to 55 °C.

Measurements made easy

One-button power measurements with standards-based setups	Quick setup and measurement time with one-button RF power measurements for all major 2G/3G, WLAN, and digital video formats.
Optimize reference level	Button included with the built in power measurements simplifies the setting up of your measurement by automatically adjusting the reference level and attenuator based on signal level.
Segmented sweep	Saves measurement and setup time by viewing in one sweep only the frequency spans of interest. Paste together up to 32 discontinuous frequency or zero spans in one sweep. Eliminate multiple setups and sweeping through unwanted frequencies.
Log sweep	Display swept measurements on a logarithmic scale of the frequency domain.
Zoom windows	Split screen display shows wide spans while zooming in on signals of interest.
Marker functions	Provides digital resolution of measurement details through peak search, continuous peak search, delta markers, marker table, and carrier-to-noise ratio. Signal track keeps unstable signals centered on the screen while band power calculates total power between user-defined limits.
Frequency counter	With 1 Hz resolution, minimizes the need for an external frequency counter.
Softkey/hardkey interface	Provides a simple user interface while retaining access to sophisticated features.
Built-in help button	Eliminates carrying manuals into the field to determine softkey/hardkey functions and remote SCPI commands.
Limit lines	Built-in limit lines and pass/fail messages simplify testing.
Built-in clock/calendar	Provides time stamps on both stored and printed data.
Automatic overload protection	Protects RF input from overly large signals (E4411B).
Automatic printer setup	Identifies connected Hewlett-Packard printer models automatically.
IntuiLink software	PC software provides easy transfer of measurement results into Microsoft® Excel and Microsoft Word.
SCPI programming interface	Allows full remote control and programming of the ESA spectrum analyzer.
IVI COM drivers	Provides interface for programming in many environments, including Visual Studio®, LabVIEW, and Agilent VEE.

Features and benefits summary – continued

Application and measurement solutions

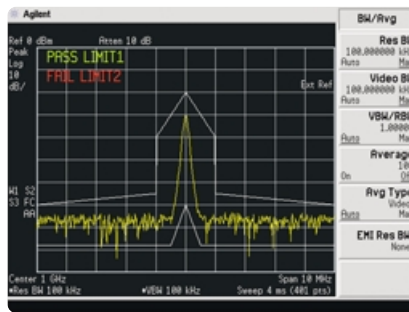
AM/FM demodulation	Combines with the built-in speaker for tune and listen applications and FM deviation measurement (optional FM demodulator provides deviation measurements).
BenchLink web remote control software	Enables remote control of analyzer over the internet or intranet. Control basic analyzer functions, view trace, waterfall, spectrogram, analog plus, and persistence displays.
Built-in power measurements	PowerSuite includes the following: channel power, occupied bandwidth, adjacent channel power, multi-carrier power ACP, CCDF, harmonic distortion, burst power, TOI, spurious emissions, SEM.
Noise figure measurement	Personality integrated into the instrument with support of smart noise source.
Phase noise measurement	Provides a convenient and fast way of measuring phase noise versus offset frequency and jitter.
Modulation analysis measurement	Provides EVM measurements for signals with basic modulation formats up to 8PSK.
Flexible demodulation analysis	Links to 89601A vector signal analysis software.
GSM/GPRS/EDGE measurement	Provides built-in measurement capability including power versus time, output RF spectrum (ORFS), and modulation analysis.
CdmaOne measurement	Provides built in measurements for cdma including code domain power and symbol constellation.
Cable fault location measurement	Provides easy to use tool to locate faults in cables.
Cable TV field service and analog broadcast	Provides tools for installing and trouble shooting cable TV.
Bluetooth measurement	Enables demodulation of Bluetooth signals including deviation.

Instrument design

Large, color VGA display with output	16.8 cm, high-resolution color display makes detailed observations easy. Includes 15-pin color VGA rear output connector for external color monitor.
Fully synthesized design	Provides continuously phase-locked precision throughout the entire sweep. Assures frequency accuracy, stability, and measurement repeatability, eliminating drift.
Snap-on battery	Eliminates the restrictions of power cords.
Rubber-encased front and rear frames	Provides impact protection in the field.
Rain-resistant front panel	Combined with louvered air vents, allows operation in diverse weather conditions.
12 Vdc power cable	Allows direct operation from automotive and truck batteries.
Parallel port	Supports output to the most popular Hewlett-Packard printers.
Floppy disk drive	Move measurement results files to your PC quick and easy.
8.0 MB data storage	Provides internal storage of measurement data and setups for future analysis or comparison.

Three New Express Analyzers

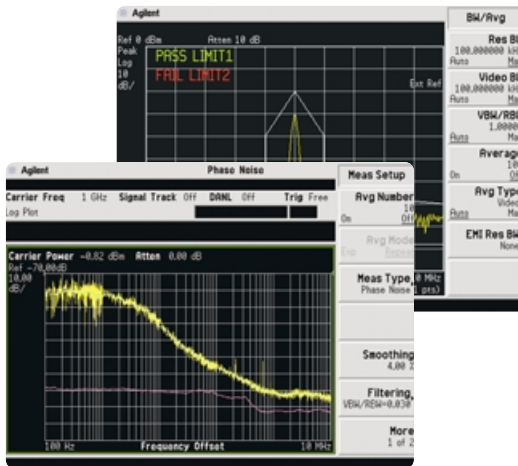
Receive faster delivery and a favorable price when you order one of the three new ESA express analyzers. The express analyzer options are based on the most frequently ordered ESA configurations and most popular options. The express analyzer options simplify the ordering process while maintaining the flexibility of the ESA platform. Just select the ESA express analyzer that meets your needs and budget.



ESA Basic analyzer (Option BAS)

For basic RF/ μ W measurements

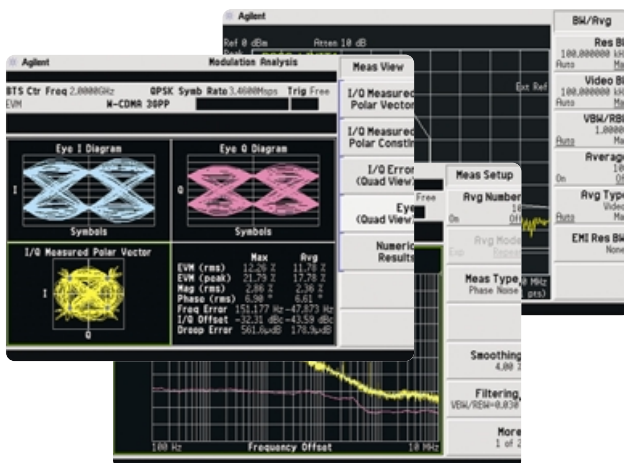
- 1.1 dB overall amplitude accuracy
- +7.5 dBm TOI
- 1 kHz or 100 Hz minimum RBW
- Standard firmware features



ESA Series Standard analyzer (Option STD)

For general RF/ μ W measurements and extended measurement capability

- 0.4 overall amplitude accuracy
- +16 dBm TOI
- 1 kHz, 10 Hz, or 1 Hz minimum RBW
- Upgradable
- Advanced firmware features and optional measurement personalities



ESA Series Communication test analyzer (Option COM)

For RF/ μ W measurements and extended measurement capability and digital demodulation options

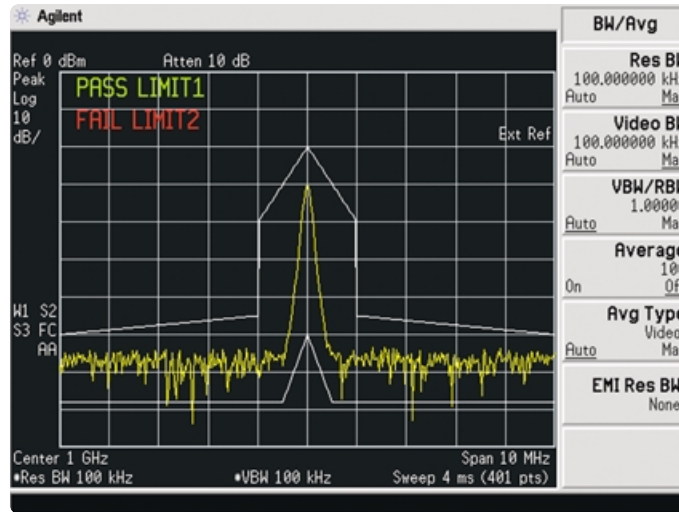
- 0.4 dB overall amplitude accuracy
- +16 dBm TOI
- 1 Hz minimum RBW
- Upgradable
- Advanced firmware features and optional demodulation personalities

Basic analyzer

(Option BAS)

The basic analyzer provides general spectrum analysis with the speed, accuracy and dynamic range to give you confidence in your measurement results.

- 1.5 GHz, 3.0 GHz, and 26.5 GHz Frequency range
- 1.1 dB overall amplitude accuracy
- 100 Hz RBW (optional)
- +7.5 dBm TOI
- 5 minute warm-up to guaranteed measurement accuracy
- Rugged design, weather resistant, snap on battery pack
- Fastest sweep time for its class (1 ms minimum)



Available frequencies

- 1.5 GHz (E4411B)
- 3.0 GHz (E4403B)
- 26.5 GHz (E4408B)

Available options

- Narrow resolution bandwidth (1DR)
- Tracking generator (BTG)
- GPIB (A4H)/Serial port (1AX)
- All accessories

Basic analyzer

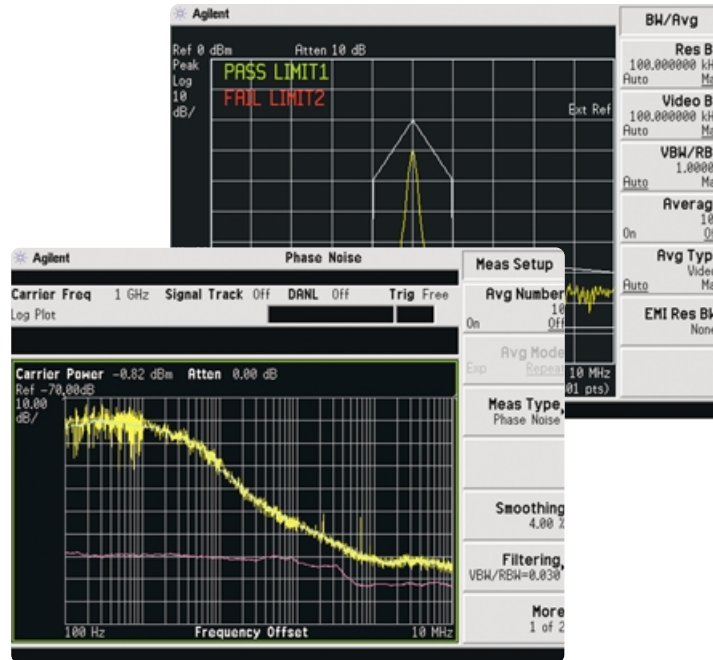
- ESA-L Series spectrum analyzer
- IF/sweep port (A4J)
- GPIB connection (A4H)

When performance and reliability count as much as your budget

Standard analyzer (Option STD)

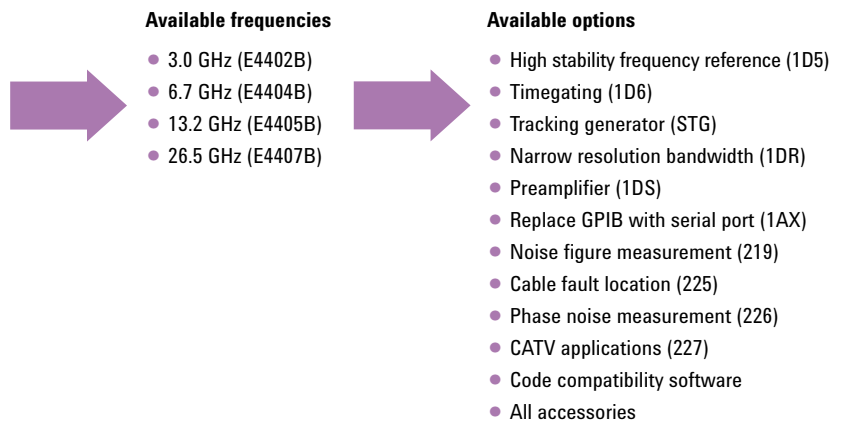
The standard analyzer includes a wide set of built-in functions and features while maintaining the flexibility to add the most popular ESA options. The standard analyzer provides the best value in spectrum analysis with performance tied to traceable specifications, worldwide support and the most comprehensive set of instrument features for a mid-performance spectrum analyzer.

- 0.4 dB overall amplitude accuracy
- 10 Hz RBW (1 Hz with option)
- +16 dBm TOI
- FM demodulation
- Optional measurement applications including phase noise and noise figure
- Upgradable platform for future needs
- Fastest sweep time for its class (1 ms min, 50 ns zero span)



Standard analyzer

- ESA-E Series spectrum analyzer
- Faster sweep, IF sweep ports (AYX)
- FM demodulation (BAA)
- GPIB connection (A4H)



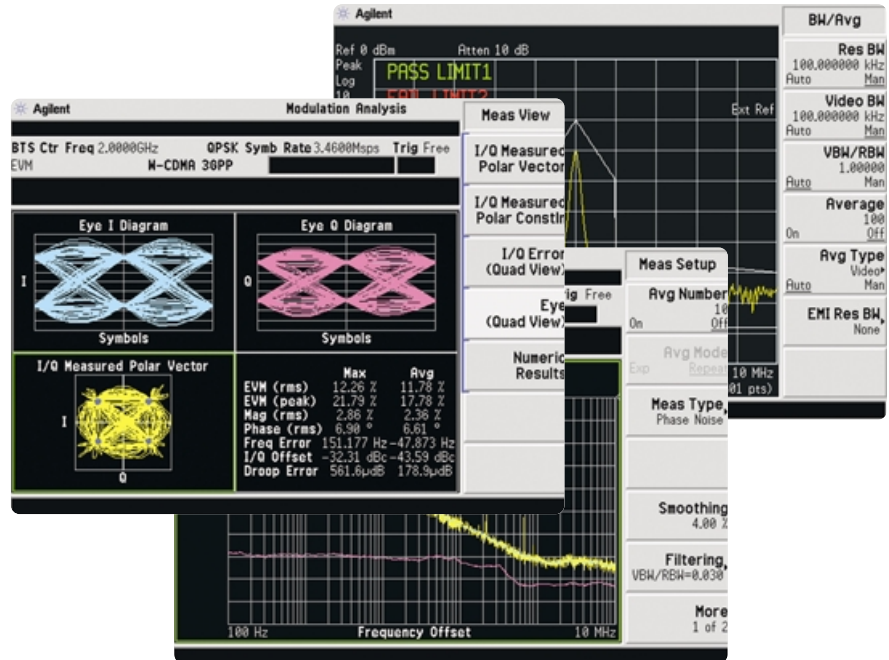
The industry standard in
mid performance spectrum analysis

Communication test analyzer

(Option COM)

Expand on the leading performance and functionality of the standard analyzer with the addition of built-in demodulation hardware. When combined with the communication focused measurement personalities or Agilent VSA software, the communication test analyzer makes a powerful tool for communications device development.

- 0.4 dB overall amplitude accuracy
- 1 Hz RBW
- Precision frequency reference
- 10 MHz demodulation bandwidth
- Optional communications focused applications such as flexible modulation analysis, GSM/EDGE, and cdmaOne
- Link to the popular Agilent 89601A vector signal analysis software for fully flexible demodulation analysis and in depth trouble shooting tools.



Available frequencies

- 3.0 GHz (E4402B)
- 6.7 GHz (E4404B)
- 13.2 GHz (E4405B)
- 26.5 GHz (E4407B)

Available options

- Time-gating (1D6)¹
- Pre-amplifier (1DS)¹
- Replace GPIB with serial port (1AX)
- Noise figure measurement (219)
- Phase noise measurement (226)
- CATV applications (227)
- Modulation analysis (229)
- cdmaOne measurement (BAC)
- GSM/GPRS/EDGE measurement (BAH/252)
- Code compatibility software
- All accessories

Communication test analyzer

- ESA-E Series spectrum analyzer
- High stability frequency reference (1D5)
- Narrow resolution bandwidth (1DR)
- 89601A VSA software link (231)
- DSP & Fast ADC (B7D)
- RF communication hardware (B7E)
- FM demodulation (BAA)
- GPIB connection (A4H)

1. Recommended options

The standard in mid-performance spectrum analysis with built-in digital demodulation capability

Customize your own ESA

Need additional functionality later on? No problem. Most ESA options are also available as upgrades.

Recommended options:

- 1D5 High stability time base
- 1DR Narrow resolution bandwidth

Available options:

Connectivity

- 1AX Replace GPIB connection (A4H) with serial Port
- A4H GPIB and parallel printer interface

Extended functionality options

- 060 Low emissions shielding
- 120 Wide offset phase noise improvement and ACPR dynamic range extension
- 1D6 Time-gated spectrum analysis
- 1DN 50 ohm tracking generator (3.0 GHz)
- 1DS Preamplifier built-in for enhanced sensitivity (3.0 GHz)
- AYQ Quasi peak detection and FM demodulation
- AYX Fast time domain sweep; IF, sweep, and video output ports
- AYZ External mixing
- B7B TV trigger and picture on screen
- B7D Digital processing and fast ADC
- B7E RF communications hardware
- B7K Cable fault location accessory kit (50 ohm)
- BAA FM demodulation deviation
- BAB ACP 3.5 mm input connector
- H26 Built-in uncalibrated pre-amp to 26.5 GHz
- H70 70 MHz IF output
- UKB 100 Hz (30 Hz usable) frequency range extension

Measurement applications

- 219 Noise figure measurement personality
- 225 Cable fault location measurement personality
- 226 Phase noise measurement personality
- 227 Cable TV field service and analog broadcast measurement personality
- 229 Modulation analysis personality
- 230 Benchlink web remote control software
- 231 ESA to 89601A vector signal analysis software link utility
- 252 EDGE upgrade to GSM/GPRS measurement personality
- 304 Bluetooth measurement analyzer/FSK demodulator
- BAC cdmaOne measurement personality
- BAH GSM/GPRS measurement personality
- 266 HP 8566/68 programming code compatibility
- 290 8590 programming code compatibility

Custom options available on E4411B only

- 1DP 75 Ω impedance
- 1DQ 75 Ω tracking generator

The ESA's flexible platform means we can build you an ESA exactly the way you need it. You can pick from a wide set of options facilitated by the ESA's six-slot card cage and flexible firmware set.



We'll build one just for you ...

Express analyzer features and performance summary

	Basic analyzer (Option BAS)	Standard analyzer (Option STD)	Communication test analyzer (Option COM)	ESA optional performance with custom configuration
Frequency range	9 kHz to 1.5, 3.0, 26.5 GHz	9 kHz to 3.0, 6.7, 13.2, 26.5 GHz	9 kHz to 3.0, 6.7, 13.2, 26.5 GHz	30 Hz to 3.0, 6.7, 13.2, 26.5 GHz (Option UKB)
Speed				
Sweep time (< 3 GHz)	4 ms to 4000 s	1 ms to 4000 s	1 ms to 4000 s	1 ms to 4000 s (Option 1D5)
Zero span sweep	4 ms to 4000 s	50 ns to 4000 s	25 ns to 4000 s	25 ns to 4000 s (Option B7D/B7E)
Remote trace transfer	30/sec	45/sec	45/sec	45/sec
Warm up time	5 min	5 min	5 min	5 min
Dynamic range				
Resolution bandwidth (Option 1DR)	100 Hz to 5 MHz	10 Hz to 5 MHz 1Hz with Option 1D5	1 Hz to 5 MHz	1 Hz to 5 MHz (Option 1DR and 1D5)
Phase noise 10 kHz/1MHz offset	-93 dBc + 20 LogN	-94 dBc/-127 dBc/Hz + 20 LogN	-94 dBc /-127 dBc/Hz + 20 LogN	-94 dBc/-136 dBc/Hz + 20 LogN (Option 120)
Measurement range (Option 1DR)	-130 dBm to +30 dBm	-140 dBm ¹ to +30 dBm -156 dBm ¹ with Option 1DS	-150 dBm to +30 dBm -167 dBm with Option 1DS	-167 dBm to +30 dBm (Options 1DR, 1D5, 1DS)
TOI	+7.5 dBm	+16 dBm	+16 dBm	+16 dBm
Accuracy				
Frequency accuracy	±101 Hz	±101 Hz	±101 Hz	±101 Hz
Span accuracy	±0.5%	±0.5%	±0.5%	±0.5%
Amplitude accuracy	±1.1 dB	0.4 dB	0.4 dB	0.4 dB
Measurement capability				
Sample of available features	PowerSuite one button measurements, IntuiLink connectivity to MS Office, amplitude corrections	Basic features plus: log sweep, segmented sweep, optional preamp, CCDF function, FM demodulation, variable sweep points	Basic and standard features plus: digital demodulation capability	Basic, standard, and communication test features plus: 75 ohm (1DP), quasi peak detection (AYQ), external mixing (AYZ), Class B emissions (060), and wide offset phase noise (120)
Available measurement applications	Cable TV	Noise figure, phase noise, cable fault, cable TV	Flexible demodulation with 89601A software, modulation analysis, GSM/EDGE, cdmaOne, noise figure, phase noise	Basic, standard, and communication test applications plus Bluetooth (304)
Future upgrades	Limited	Available	Available	Available

1. The performance level for the Standard Analyzer is -180 dBm with Option 1DR only. Performance improves to -150 dBm with the addition of Option 1D5, or to -167 dBm with Options 1DR, 1D5, and preamplification Option 1DS.

ESA accessories



A whole product solution

The performance of the ESA Series spectrum analyzer is only a small part of what you get from Agilent Technologies. Agilent strives to provide complete solutions that go beyond our customers' expectations. Only Agilent offers the depth and breadth of enhancements, software, services, connectivity, accessibility and support to help our customers reach their measurements objectives. Please contact Agilent for more information.

The Agilent ESA Series is manufactured in an ISO 9001 registered facility to Agilent's exacting standards.

Product peripherals and accessories

- battery packs and 12 Vdc cables
- rack mounts
- operating/carrying, backpack and transit cases
- external mixers to 325 GHz
- pre-amplifiers to 26.5 GHz
- high-impedance active probes
- RF/MW limiters, adapters & cables

PC connectivity & software

- floppy disk drive
- GPIB or RS232 interfaces
- VXiplug&play drivers
- IVI-COM drivers
- MS Word and Excel connectivity with IntuiLink software
- EEsof Advanced Design System driver (instrument link)
- programming examples on CD-ROM
- SCPI (Standard Commands for Programmable Instruments)
- custom software service
- BenchLink web remote control software
- HP 8566/68 programming code compatibility
- 8590 Series programming code compatibility
- 8590 Series/ESA programming conversion guide



Post-sales support

- 1, 3, or 5 year global warranty
- worldwide call center and calibration service center support network
- one-year calibration intervals
- FREE firmware upgrades and service notes available from Agilent's Web site
- PC-based calibration software
- computer-based service training on CD-ROM
- flexible support options to meet your needs

Pre-sales services

- rentals, leasing, and financing
- application engineering and consulting services
- application notes
- custom product modifications
- custom downloadable programs
- product literature available from Agilent's Web site
- demonstration units available for evaluation
- trade-up programs
- support at least 5 years beyond production life of product

Training and access to information

- download firmware, manuals, application notes, and other documentation from web
- web-based support and FAQ's
- built in context sensitive help
- factory service training
- technical seminars
- localized operating manuals

Related literature

<i>Agilent IntuiLink Software – Data Sheet</i>	5980-3115EN
<i>AN150, Signal Analysis Basics – Application Note</i>	5952-0292
<i>AN1286-1: 8 Hints for Making Better Spectrum Analyzer Measurements</i>	5965-7009E
<i>BenchLink Web Remote Control Software Option 230 – Technical Overview</i>	5988-2610EN
<i>Bluetooth Measurement Solution for the ESA-E Series Spectrum Analyzer – Technical Overview</i>	5980-2786E
<i>Cable Fault Location Personality for the ESA-E Series Spectrum Analyzers Option 225 – Technical Overview</i>	5980-1915E
<i>Cable TV Personality for the ESA E-Series Spectrum Analyzers, Option 227 – Technical Overview</i>	5980-2297E
<i>cdmaOne Measurement Solutions for the Agilent ESA-E Series Spectrum Analyzers – Technical Overview</i>	5968-6869E
<i>E1779A Snap-on Battery Pack – Technical Overview</i>	5966-1851E
<i>ESA Series Spectrum Analyzer – Data Sheet</i>	5968-3386E
<i>EMC Analyzers and EMI Software – Brochure</i>	5968-2516E
<i>ESA Phase Noise – Technical Overview</i>	5988-4348EN
<i>ESA-E Series Spectrum Analyzers GSM with EDGE Measurement Personality – Technical Overview</i>	5968-6871E
<i>ESA-E Series Spectrum Analyzer Performance Guide Using the 89601A Vector Signal Analysis Software – Application Note</i>	5988-4097EN
<i>ESA Series Spectrum Analyzer Self Guided Demo – Application Note</i>	5968-3658E
<i>ESA Series Spectrum Analyzers Noise Figure Measurements Personality – Technical Overview with Self-Guided Demonstration</i>	5989-0215EN
<i>ESA Series Noise Figure Measurement Personality – Photo Card</i>	5989-0344EN
<i>ESA/EMC Spectrum Analyzer – Configuration Guide</i>	5968-3412E
<i>ESA-E Series Self-Guided Demonstration for the Modulation Analysis Measurement Personality – Application Note</i>	5988-2521EN
<i>ESA-E Series Spectrum Analyzer Bluetooth Measurement Option Self-Guided Demo – Application Note</i>	5980-2577EN
<i>GSM/GPRS Measurement Solutions for the Agilent ESA-E Series Spectrum Analyzers – Technical Overview</i>	5968-6871E
<i>Measuring signals above 26.5 GHz – Photo Card</i>	5968-6873E
<i>Modulation Analysis Measurement Personality for the ESA-E Series Spectrum Analyzers – Technical Overview</i>	5988-2116EN
<i>N2717A Performance Verification and Adjustment Software for the Agilent ESA Series Spectrum Analyzer – Technical Overview</i>	5968-5478E
<i>Phase Noise Measurement Personality ESA-E Series Spectrum Analyzers Option 226 – Photo Card</i>	5980-1191E
<i>Select the Right Spectrum Analyzer for Your Needs – Selection Guide</i>	5968-3413E
<i>TV Transmission Quality Measurements – Photo Card</i>	5968-6874E

For the latest information on the Agilent ESA Series see our Web page at:

www.agilent.com/find/esa

For more information about IntuiLink software visit our Web site at:

www.agilent.com/find/IntuiLink



Agilent Email Updates

www.agilent.com/find/emailupdates

Get the latest information on the products and applications you select.

Microsoft is a U.S. registered trademark of Microsoft Corporation.
Bluetooth is a trademark owned by the Bluetooth SIG, Inc. and licensed to Agilent Technologies, Inc.
Cdma2000 is a registered trademark of the Telecommunications Industry Association (TIA-USA).
Visual Studio is a registered trademark of Microsoft Corporation in the United States and/or other countries.

Agilent Technologies' Test and Measurement Support, Services, and Assistance

Agilent Technologies aims to maximize the value you receive, while minimizing your risk and problems. We strive to ensure that you get the test and measurement capabilities you paid for and obtain the support you need. Our extensive support resources and services can help you choose the right Agilent products for your applications and apply them successfully. Every instrument and system we sell has a global warranty. Support is available for at least five years beyond the production life of the product. Two concepts underlie Agilent's overall support policy: "Our Promise" and "Your Advantage."

Our Promise

Our Promise means your Agilent test and measurement equipment will meet its advertised performance and functionality. When you are choosing new equipment, we will help you with product information, including realistic performance specifications and practical recommendations from experienced test engineers. When you receive your new Agilent equipment, we can help verify that it works properly and help with initial product operation.

Your Advantage

Your Advantage means that Agilent offers a wide range of additional expert test and measurement services, which you can purchase according to your unique technical and business needs. Solve problems efficiently and gain a competitive edge by contracting with us for calibration, extra-cost upgrades, out-of-warranty repairs, and onsite education and training, as well as design, system integration, project management, and other professional engineering services. Experienced Agilent engineers and technicians worldwide can help you maximize your productivity, optimize the return on investment of your Agilent instruments and systems, and obtain dependable measurement accuracy for the life of those products.

Agilent T&M Software and Connectivity

Agilent's Test and Measurement software and connectivity products, solutions and developer network allows you to take time out of connecting your instruments to your computer with tools based on PC standards, so you can focus on your tasks, not on your connections. Visit www.agilent.com/find/connectivity for more information.

For more information on Agilent Technologies' products, applications or services, please contact your local Agilent office. The complete list is available at:

www.agilent.com/find/contactus

Product specifications and descriptions in this document subject to change without notice.

Phone or Fax

United States:

(tel) 800 829 4444
(fax) 800 829 4433

Canada:

(tel) 877 894 4414
(fax) 905 282 6495

China:

(tel) 800 810 0189
(fax) 800 820 2816

Europe:

(tel) 31 20 547 2111

Japan:

(tel) (81) 426 56 7832
(fax) (81) 426 56 7840

Korea:

(tel) (080) 769 0800
(fax) (080) 769 0900

Latin America:

(tel) (305) 269 7500

Taiwan:

(tel) 0800 047 866
(fax) 0800 286 331

Other Asia Pacific Countries:

(tel) (65) 6375 8100
(fax) (65) 6755 0042

Email: tm_ap@agilent.com

© Agilent Technologies, Inc., 2000, 2001, 2002, 2003, 2004
Printed in USA, July 29, 2004

5968-3278E



Agilent Technologies